

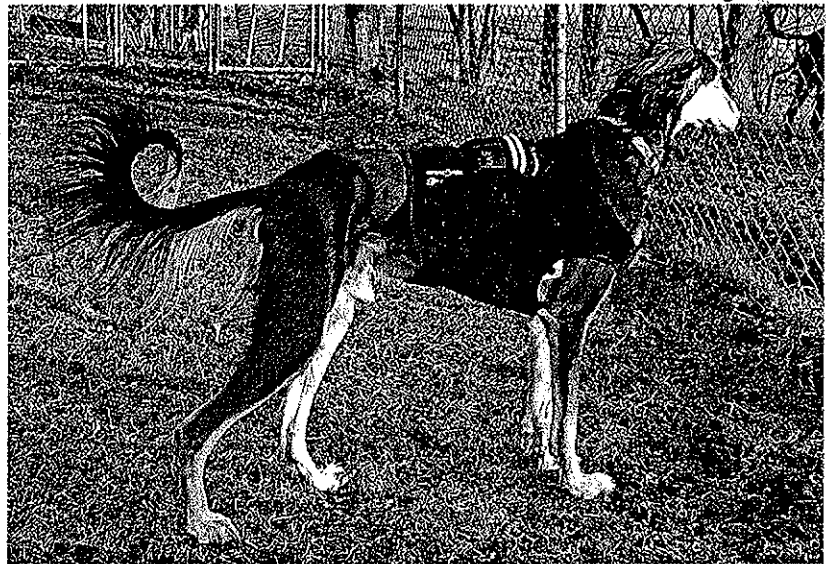
36

## requesting support for a Saluki Specific Heart Study

The two major health concerns in Salukis are cancer and heart conditions. Saluki Health Research, Inc. was founded to help support investigations of these health issues. Dr. Robert Sanders, Dip, ACVIM, Cardiology has recently submitted an Acorn Grant proposal to the AKC Canine Health Foundation requesting support for a Saluki heart study. The following is his summary of the proposed study.

Ventricular arrhythmias or irregular heart beats are caused by abnormal electrical activity in the main pumping chambers of the heart, the ventricles. In people and dogs, ventricular arrhythmias are known to cause significant clinical signs and or sudden death. Identification of these arrhythmias requires monitoring of the heart rate and rhythm. As ventricular arrhythmias may not occur during any given short period they may not be detected on a standard surface electrocardiogram (ECG). Furthermore a brief ECG may not fully evaluate the true frequency, complexity and therefore severity of the detected ventricular arrhythmia. Consequently, longer term monitoring in the home environment is required for reliable detection and complete characterization of ventricular arrhythmias. Holter monitors can be placed that will record heart rate and rhythm for up to seven days.

Certain dog breeds, including Boxers and Doberman pinchers, are known to be predisposed to the development of ventricular arrhythmias. Little is known about



Holter monitor with vest covering

rate of occurrence of ventricular arrhythmias in Saluki dogs but they are thought to be predisposed to ventricular arrhythmias and consequently sudden death as well. We propose to place Holter monitors on 25 normal Saluki dogs to evaluate the frequency and complexity of ventricular arrhythmias that may occur. This will help us better understand the frequency and complexity of ventricular arrhythmias present in this breed of dog.

To be eligible to participate in this study, Salukis will be screened for cardiovascular disease by physical examination and echocardiography by a board certified cardiologist (RAS) at the Veterinary Teaching Hospital, College of Veterinary Medicine, Michigan State University. If no abnormalities are noted they will be eligible to be included in the study. A Holter monitor will be placed which is capable of recording the dog's heart rate and rhythm for

a seven-day period of time as the dog goes about their normal daily activities. This will yield a great deal of valuable information about the heart rate and rhythm abnormalities in normal Saluki dogs. A follow up study is being planned to investigate heart rate and rhythm abnormalities in Salukis with cardiovascular disease.

Saluki Health Research, Inc. has pledged to help financially support this study. After approval of this grant from the CHF, I would hope that the Saluki Club of America will support this study through a contribution from their CHF Donor Advised fund. I also encourage Saluki owners to have their Salukis participate. This study could help further knowledge about our ancient breed.

Don't hesitate to contact me with any questions.

MaryDee Sist, DVM  
salukihealth@aol.com  
Saluki Health Research, Inc  
www.salukihealthresearch.com

517-655-1354

ASA newsletter, Winter 2012 ♦ 1